



Discover the Nature Center

Visit the Anita Purves Nature Center, Urbana's connection to natural history and the environment. Learn more about animals and plants you spot in your back yard, the local park, or sitting in a tree. Located at the north end of Crystal Lake Park, the Anita Purves Nature Center is an environmental education facility open free to the public. Next door you'll find Busey Woods, a 59-acre forest preserve with a boardwalk loop, seasonal ponds and more. The Nature Center is on the MTD gold bus line on weekdays and the silver bus line on Saturdays. For information about programs and services, please call 384-4062.

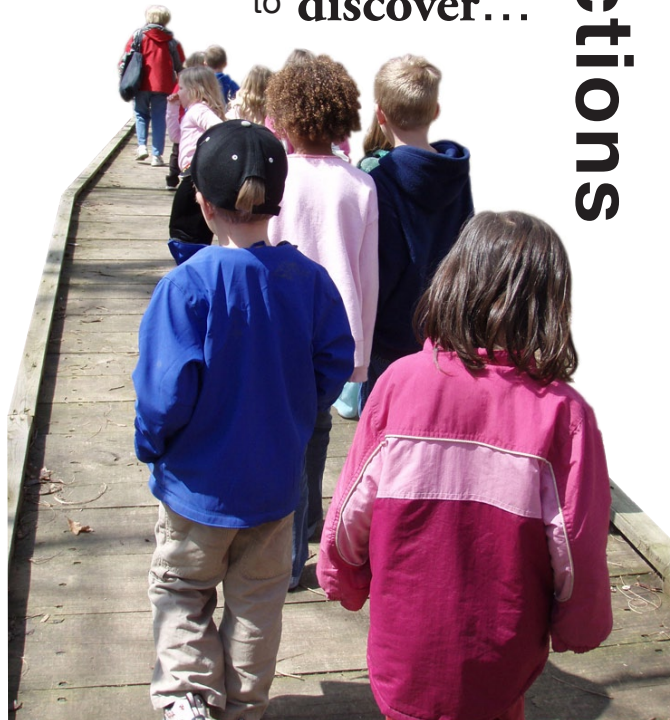
Hours: Mon-Fri 8am-5pm,
Sat 9am-4pm, Sun closed

 **Urbana Park District**

Anita Purves Nature Center

1505 N. Broadway
Urbana, IL 61801
(217) 384-4062
Fax: (217) 384-1052

Nature is yours
to discover...



 Nature Connections

Come
Visit Us!

Special Tour Programs

Stop in for your very own tour or custom program at the Urbana Park District's Anita Purves Nature Center. Have a naturalist guide you through the nearby Busey Woods and Crystal Lake Park. Whether it is a morning, after school, or weekend excursion you can discover nature while having fun. Tours may include a variety of hands-on activities, guided hikes, and even an encounter with live animals. Our Special Tours can help you and your organization gain a world of experience and are even designed to achieve most Scout Badges. Take advantage of having your very own naturalist be your personal guide.

COST: Programs are \$30/ tour. Groups larger than 12 require additional fees. Please reserve your tour at least two weeks in advance. Call (217) 384-4062 for scheduling and program information.

Let Us
Visit You!

Traveling Naturalist Program

Let a naturalist visit your community organization. We visit every type of community organization from after school and preschool programs, to church groups and scout troops, to adult care centers. Request a single, weekly or monthly program. Programs may include hands-on activities, stories, crafts, hikes and more. We have a large number of natural artifacts from shells to skulls, pictures and posters, and even wild animals to be brought along. Select from a variety of topics or have us create one especially for you.

COST: Programs are \$50/ hour long presentation. Groups larger than 12 require additional fees. Please reserve your program at least two weeks in advance. Call (217) 384-4062 for scheduling and program information.

Countless topics
to choose from!

Traveling Naturalist & Special Tour Program Topics:

- | | |
|-----------------------|--------------------|
| Reptiles & Amphibians | Illinois Prairies |
| Birds | Pond Dipping |
| Mammals | Invasive Species |
| Insects | Using a Compass |
| Trees | Outdoor Survival |
| Night Adaptations | Endangered Species |
| Wintering Animals | Dinosaurs |
| Recycling | Owls |
| Conservation | Snakes |
| Weather | Turtles |
| Geology | Animal Homes |
| Ecology | The Night Sky |

Don't see your topic? Custom programs can be made to fit your needs; additional fees required.



Natural Areas

The Urbana Park District maintains several local natural areas for your enjoyment. Our goal is to restore areas characteristic of Illinois' most diverse habitats. Restoration includes planting and seeding native plants, removing nuisance plants, and conducting prescribed burns to encourage healthy growth.

These Natural Areas are for anyone interested in exploring and learning more about the outdoors. They are available for hiking, plant and animal study and photography. While visiting, please respect the plants and animals that have returned to these natural landscapes. Take only memories; leave only footprints.

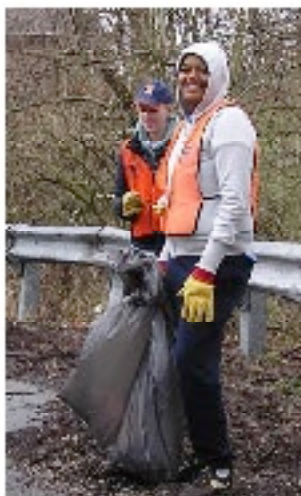
We offer programs for **ALL AGES**
that fit the needs of any group
or organization!

Come make the most of a wonderful community resource right in the heart of your neighborhood!

Giving Back!

Service Projects

Looking for a community service project? The district's natural areas could always use a helping hand. Assist with land management practice such as trail maintenance, seed collecting, plant inventory, litter pick up. Cut back invasive species, plant native trees and plants, or help clear trails. There is no fee for these services. Your help is greatly appreciated. Call (217) 384-4062 for scheduling and program information.



Adopt An Education Animal

The Nature Center's education animals help to demonstrate the variety of animals that lives in Illinois to thousands of people every year. These animals are part of the living exhibits in the Field Station and also make appearances at schools as part of our education program.

Your financial contribution, or "adoption", helps provide the animals with shelter, medical care and the food they need. Adoption is a great way to support environmental education in Champaign County. An adoption also makes a unique gift for friends or family.



Resources at the Nature Center

Nature Discovery Packs

Planning your own hike? Borrow a Nature Discovery Pack and take it along when you explore local parks and natural areas. These packs include magnifiers and binoculars, field guides to help you identify what you encounter, suggest exploratory hike activities, and more. Specific packs about astronomy, birds, ponds, Busy Woods and Mendenbrook Ponds are available. Call 384-4062 for more information.



Wildlife Observation Room

Looking for a relaxing way to observe nature? Come over in our windowed observation room and watch birds and other small wildlife at the outdoor feeding station. Listen to their calls and chirps through our parabolic sound system which helps to bring the outdoors in. Please stop and sit in any season to observe the wonderful varieties of wildlife. Donations of sunflower and mixed bird seed to our feeding area are appreciated.

For information about other programs and services, please call 384-4062, refer to the Urbana Park District Leisure Guide or visit www.urbana parks.org

We Have Badge Programs!

Scout leaders, are you working on a badge or patch? Need to fulfill a special requirement?

Badge Programs

The Anita Purves Center's wide variety of program topics can help Scout troops complete their badge requirements. Most nature related and earth science badges can be started and even completed at the Nature Center through the Special Tier and Traveling Naturalist Programs. The Environmental Public Programs Supervisor can review specific badge/patch requirements with you. Refer to the Program Topic and Services Chart below to select which program topics best meet your badge requirements. Call (217) 384-4062 for scheduling and program information.



What Badges do we cover?

Program Topics and Other Services	Elementary Badges Try-It Badges (Ages 6-8)	Junior Girl Scout Badges (Ages 9-11)	Crested & Senior Interest Projects (Ages 11-17)	Cub Scouts (Ages 8-9)	Webelos (Ages 9-11)	Boy Scouts (Ages 11-17)	
Reptile & Amphibian	Animals	Wildlife	Wildlife		Naturalist	Pop & Amp. Study	
Mammals			Wildlife			Mammal Study	
Insects			All About Birds			Insect Study	
Birds	Eco-Explorer	Earth Connections	Wildlife	Share w/ Wildlife	Naturalist	Env. Science	
Animal Homes			Eco-Action			Your Living World	
Writing Animals			Planet Power			Planet Care	Outdoorman
Ecoliter			Plant Life			Planet Care	Forester
Endangered Species	Plants	Flora & Animals	Planet Power	Let's go Outdoors	Forester	Env. Science	
UFD Service Projects						Senses	Planet Care
Invasive Species	Earth and Sky	Rocks Rock	Planet Power	Let's go Outdoors	Geological	Geology	
Trees and Forests						Weather	Planet Care
Night Adaptations	Earth is Our Home	Outdoor Creativity	Planet Power	Let's go Outdoors	Geological	Weather	
Weather						Water Everywhere	Planet Care
Geology	Water Everywhere	Outdoor Sustainability	Eco-Action	Let's go Outdoors	Geological	Weather	
The Night Sky						Water Fun	Planet Care
Flora/Fauna	Outdoor Adventure	Finding Your Way	Planet Power	Let's go Outdoors	Geological	Weather	
Conservation						Outdoor Survival	Planet Care
Pond Dipping	Outdoor Adventure	Finding Your Way	Planet Power	Let's go Outdoors	Geological	Weather	
Using a Compass						Outdoor Survival	Planet Care
Outdoor Survival	Outdoor Adventure	Finding Your Way	Planet Power	Let's go Outdoors	Geological	Weather	
Fire Ping Pong						Outdoor Survival	Planet Care

For information about other programs and services, please call 384-4062, refer to the Urbana Park District Leisure Guide or visit www.urbana parks.org