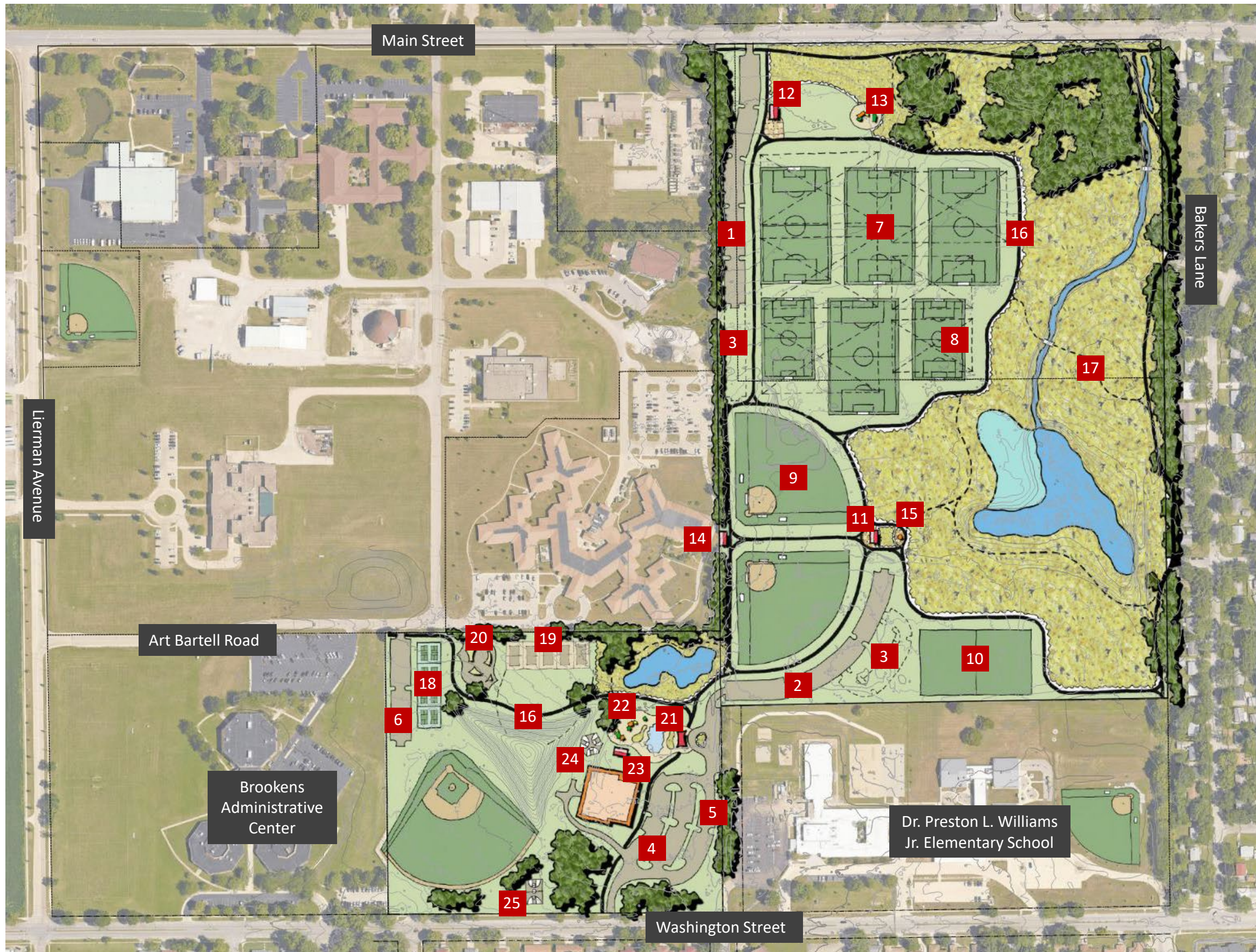


OPTION 1 – MASTER PLAN

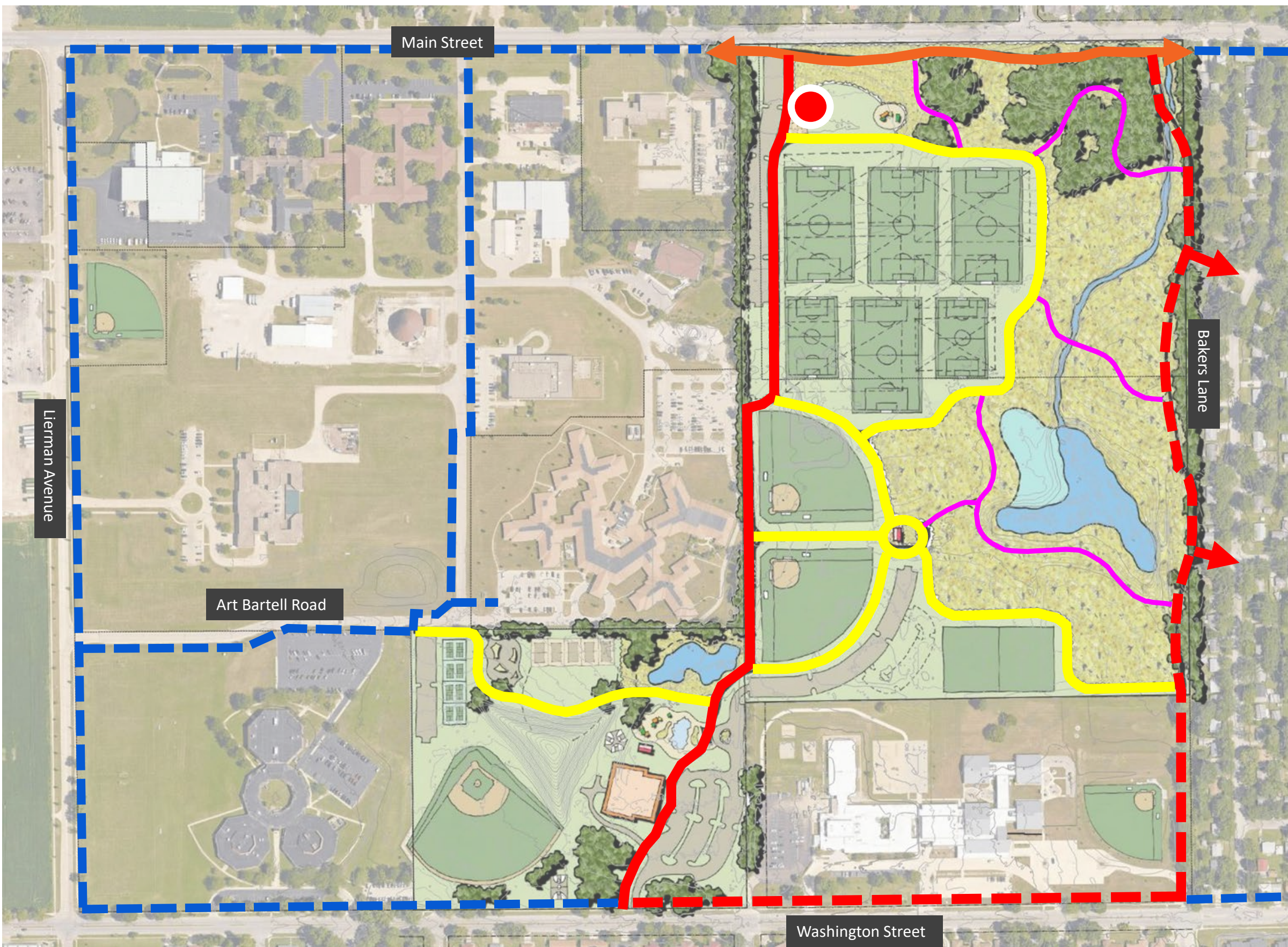


Total Area (Weaver Only)	59.25 acres
Natural Area (Weaver Only)	~29.25 acres (49%)
Parking Data	<ul style="list-style-type: none"> 1 - Weaver North: 155 2 - Weaver South: 130 3 - Weaver Overflow: 145 4 - Prairie East Ph. 1: 81 5 - Prairie East Ph. 2: ~ 71 6 - Prairie West: 60 Total: ~ 642
Suggested New Amenities	<p>Weaver Park:</p> <ul style="list-style-type: none"> 7 - (4) Large Soccer Fields (180' x 330') 8 - (2) Small Soccer Fields (141' x 225') 9 - (2) Softball Diamonds (300') 10 - (1) Multi-Purpose Field (180' x 330') 11 - (1) Restroom Building 12 - (1) KRT Trailhead with Restroom 13 - (1) Small Playground 14 - (1) Storage Shed (Softball) 15 - (1) Wetland Overlook 16 - 10' Wide Concrete Paths 17 - 5' Wide Soft Surface Paths <p>Prairie Park:</p> <ul style="list-style-type: none"> 18 - (4 to 8) Pickleball Courts 19 - (5) Sand Volleyball Courts 20 - (1) Skate Park 21 - (1) Splash Pad 22 - (1) Large Playground 23 - (1) Restroom (Splash Pad) 24 - (3) Half-Court Basketball 25 - (1) Full-Court Basketball (50' x 75')

WEAVER + PRAIRIE PARK MASTER PLAN



OPTION 1 - TRAILWAYS



Running Loop	~1.5 Miles
	Existing Multi-Use Path
	ITEP Funded Multi-Use Concrete Path (Est. 2025 Construction)
	Multi-Use Concrete Path to Complete Loop
	KRT Trailhead (Est. 2025-26 Construction)
	Multi-Use Concrete Maintenance and Recreation Paths
	Natural Surface Narrow Walking Trails
	Adjacent Pedestrian / Bicycle Networks

