



*It is the mission of the Urbana Park District to:*

- Improve the quality of life of its citizens through a responsive, efficient, and creative park and recreation system,*
- Pursue excellence in a variety of programs, parks and special facilities that contribute to the attractiveness of neighborhoods, conservation of the environment and the overall health of the community.*

**NOTICE AND AGENDA OF MEETING  
URBANA PARK DISTRICT BOARD OF COMMISSIONERS  
BOARD STUDY SESSION  
TUESDAY, NOVEMBER 5, 2019  
6:30 PM  
PLANNING AND OPERATIONS FACILITY  
1011 E. KERR AVENUE  
URBANA, ILLINOIS 61802**

*Board Study Sessions are designed for the Board to study, review and discuss specific topics. Actions are not typically taken during a Study Session, unless specifically noted on the agenda.*

**I. Call to Order**

**A. Remote Attendance**

*The Board may authorize, by a voice vote of the physically present board members, any Commissioner wishing to attend remotely, pursuant to the UPD Remote Attendance Policy (Ord 2017-03).*

**II. Accept Agenda**

**III. Public Comment**

*Any member of the public may make a brief statement at this time.*

**IV. Discussion**

**A. Aquatics Program Review**

**B. Health & Wellness Update**

**V. Comments from Commissioners**

**VI. Adjourn**

Note: This Meeting Agenda and its supporting materials are on the UPD website at <http://www.urbanaparks.org/documents/index.html>, choose the "Public Meetings" category and search for the meeting information you wish to download.



# Health and Wellness Facility

Urbana Park District

# AGENDA



Review the Scope of Work



Existing Urbana Parks



Discuss Key Stakeholders



Define Project Wishes and Desires



Next Steps

# Scope of Work

## Phase 1 – Fact finding

*October*

- Gather relevant information to best inform design decisions for the project.

## Phase 2 – Design

*November*

- Develop formal project program, two design options, and review with UPD.

## Phase 3 – Delivery

*January*

- Present the Final Design with cost opinion and pro forma for chosen scheme.

### Deliverables:

- Digital Presentations and Drawings
- Graphically Driven Vision Booklet

# Scope of Work

## Phase 1 – Fact finding

*October*

- Meet with Urbana Park District staff to gather facility and site requirements, wishes and desires. Develop a better understanding of discussions and evaluations that have occurred before our involvement with the project.
- Analyze and recommend up to six possible site locations and identify advantages / disadvantages, opportunities and limitations of each. Analysis shall include, but not be limited to topography, utilities, stormwater management, and pre-existing conditions. Sites will include property owned by Urbana Park District, the City of Urbana, and other private sources.
- Review possible site locations with Urbana Park District before stakeholder group meeting.
- Attend one meeting with stakeholder groups that may include, but are not limited to: City of Urbana, Champaign County, Urbana School District, CUMTD, potential teaming partners like Carle or OSF, etc. The goal will be to obtain input on the various site options and discuss advantages and disadvantages for each. We will lead and guide the public outreach and stakeholder involvement sessions, while recording and documenting the input.

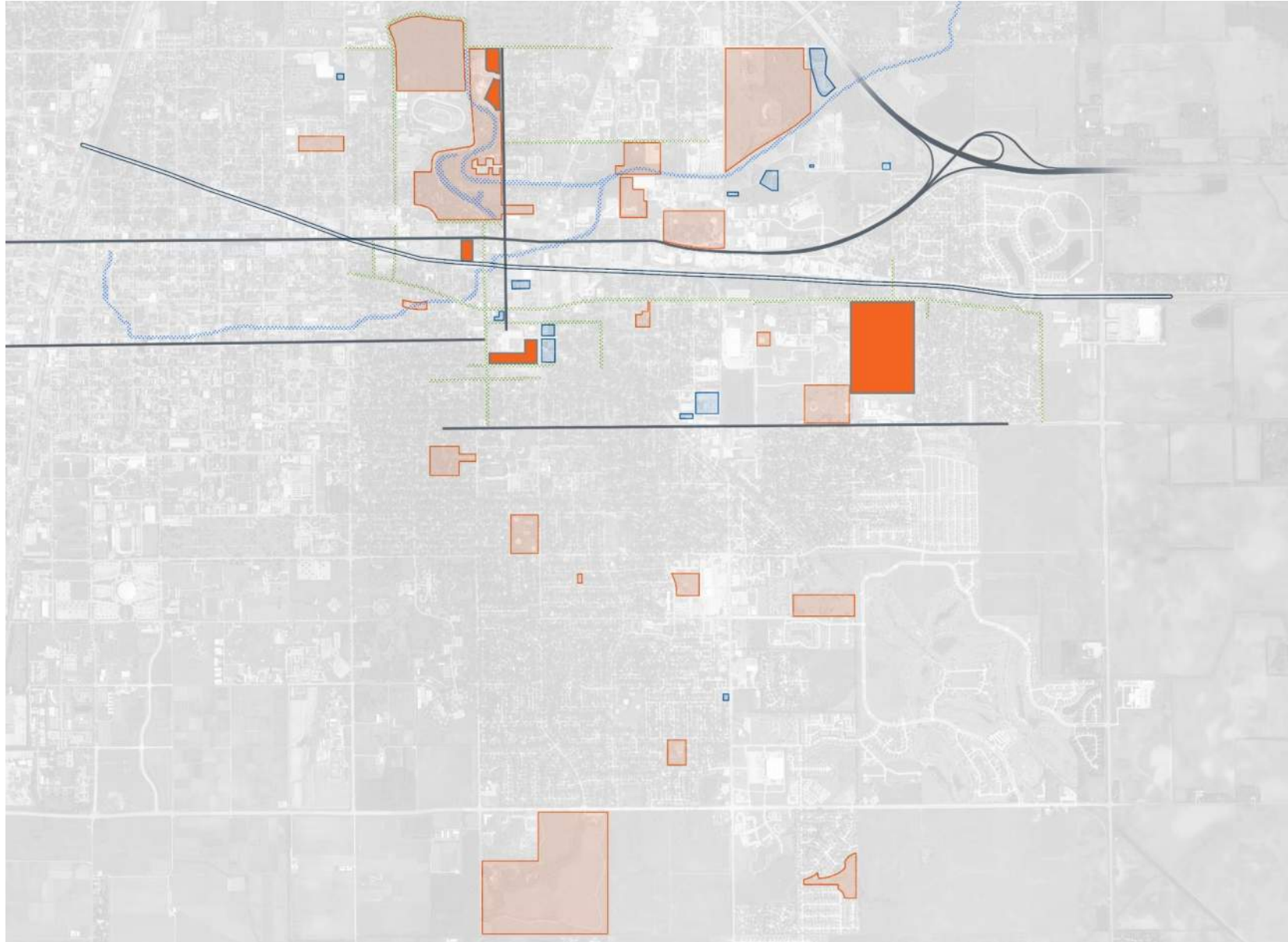
A blue geometric pattern consisting of overlapping hexagons and polygons, located on the left side of the slide.

# Urbana Parks

# Urbana Owned

## Phase 1 – Fact finding

- Analyze and recommend up to **six possible site locations** and identify advantages / disadvantages, opportunities and limitations of each. Analysis shall include, but not be limited to topography, utilities, stormwater management, and pre-existing conditions. Sites will include property owned by Urbana Park District, the City of Urbana, and other private sources.
- Review possible site locations with Urbana Park District before stakeholder group meeting.



# Previously Considered

Kickapoo Rail Trail

Boneyard Creek / Crystal Lake

Bike Path



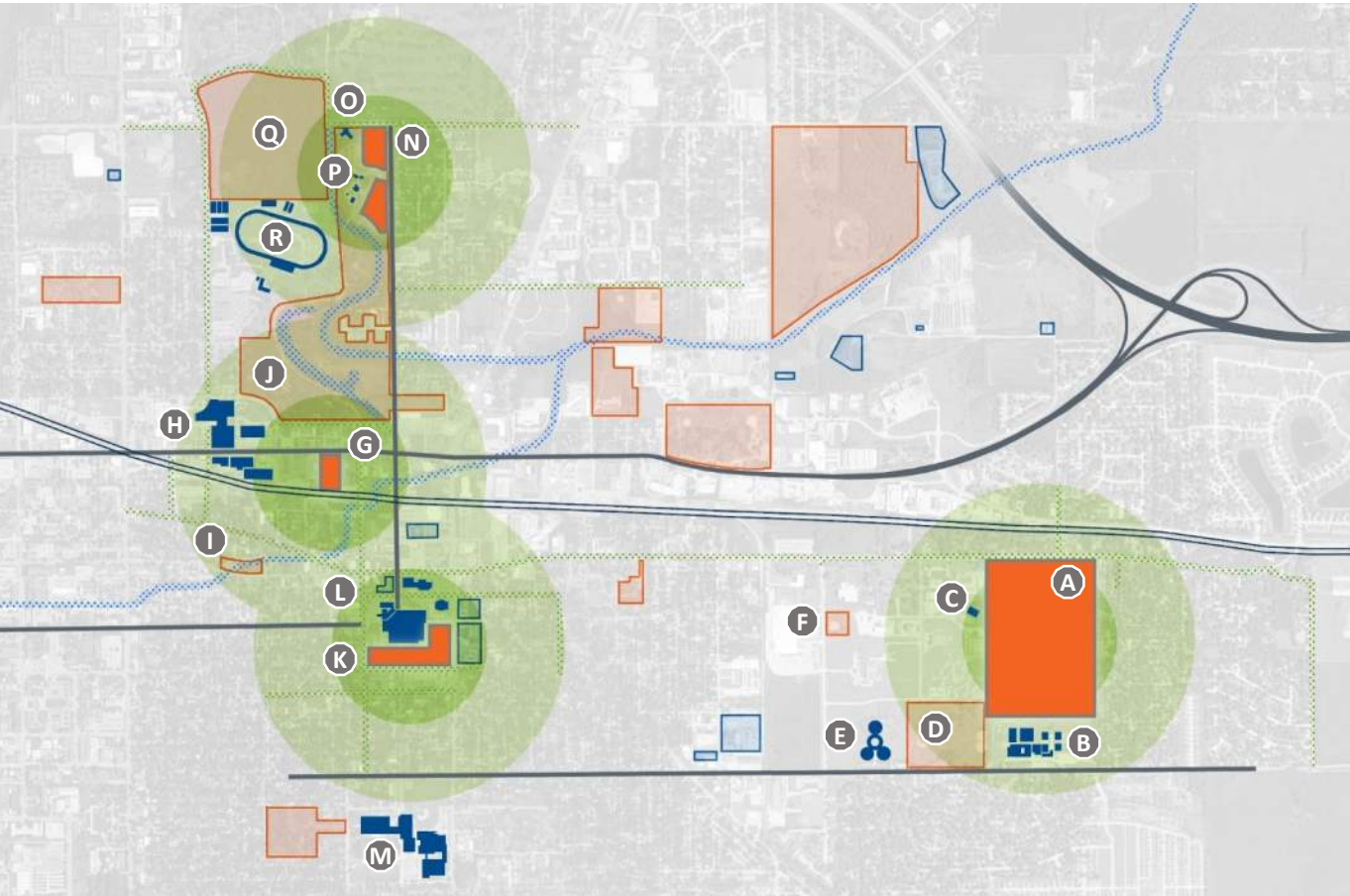
5min  
walk

10min  
walk

Urbana Parks



Urbana Properties



**A** WEAVER PARK

**B** DR. PRESTON L WILLIAMS JR. ELEMENTARY SCHOOL

**C** CHAMPAIGN COUNTY HUMANE SOCIETY

**D** PRAIRIE PARK

**E** BROOKENS ADMINISTRATIVE CENTER / CHAMPAIGN COUNTY CLERK

**F** CANADAY PARK

**G** LEAL PARK

**H** CARLE FOUNDATION HOSPITAL CAMPUS

**I** PHILLIPS RECREATION CENTER

**J** CRYSTAL LAKE PARK

**K** LINCOLN SQUARE

**L** DOWNTOWN URBANA

**M** URBANA MIDDLE SCHOOL

**N** CRYSTAL LAKE SITE

**O** ANITA PURVES NATURE CENTER

**P** CRYSTAL LAKE PARK FAMILY AQUATIC CENTER

**Q** BUSEY WOODS

**R** CHAMPAIGN COUNTY FAIR GROUNDS

# Weaver Park

Kickapoo Rail Trail

Boneyard Creek / Crystal Lake

Bike Path



5min  
walk

10min  
walk

Urbana Parks



Urbana Properties



# Leal Park

Kickapoo Rail Trail



Boneyard Creek / Crystal Lake



Bike Path



5min  
walk



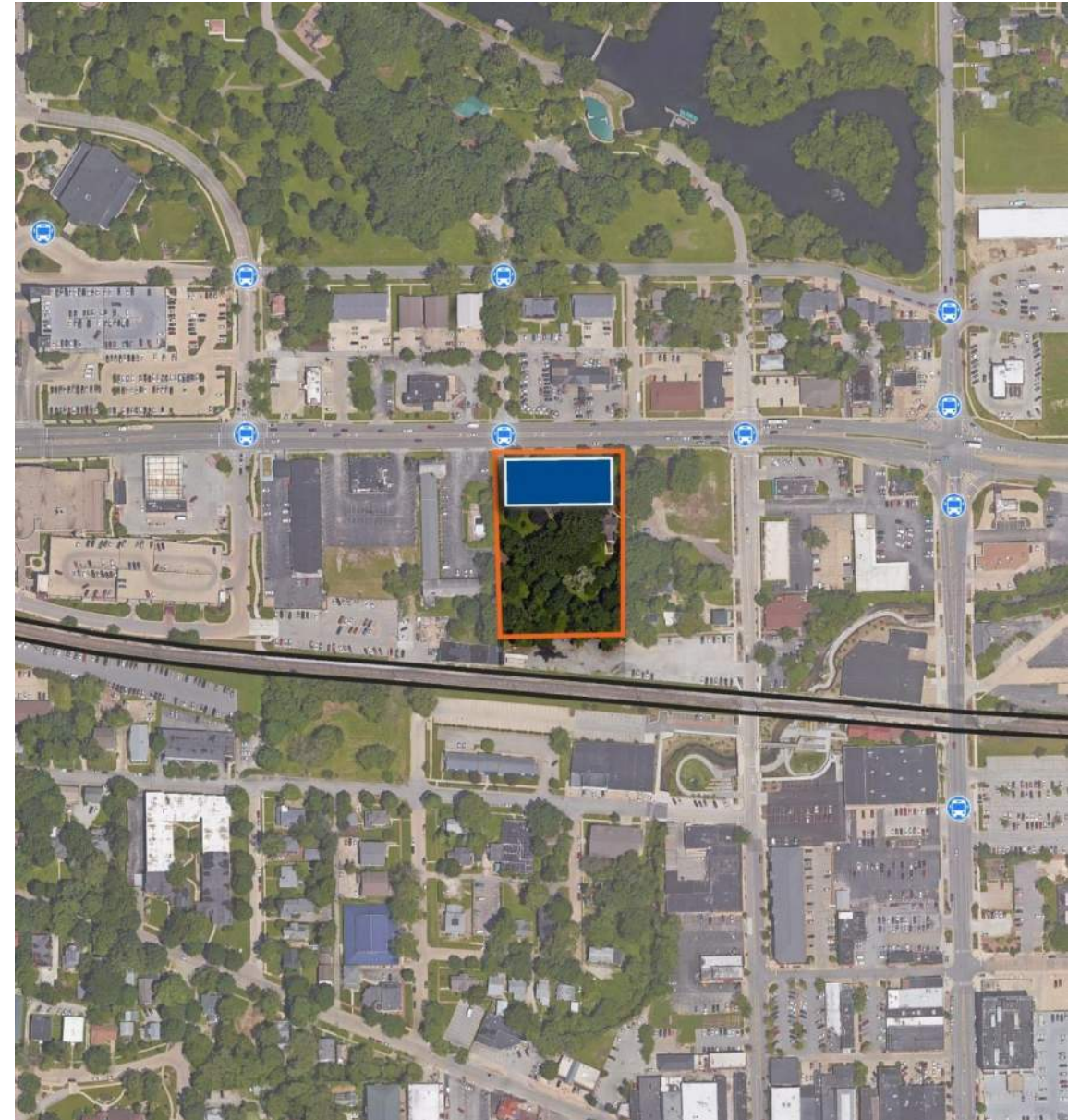
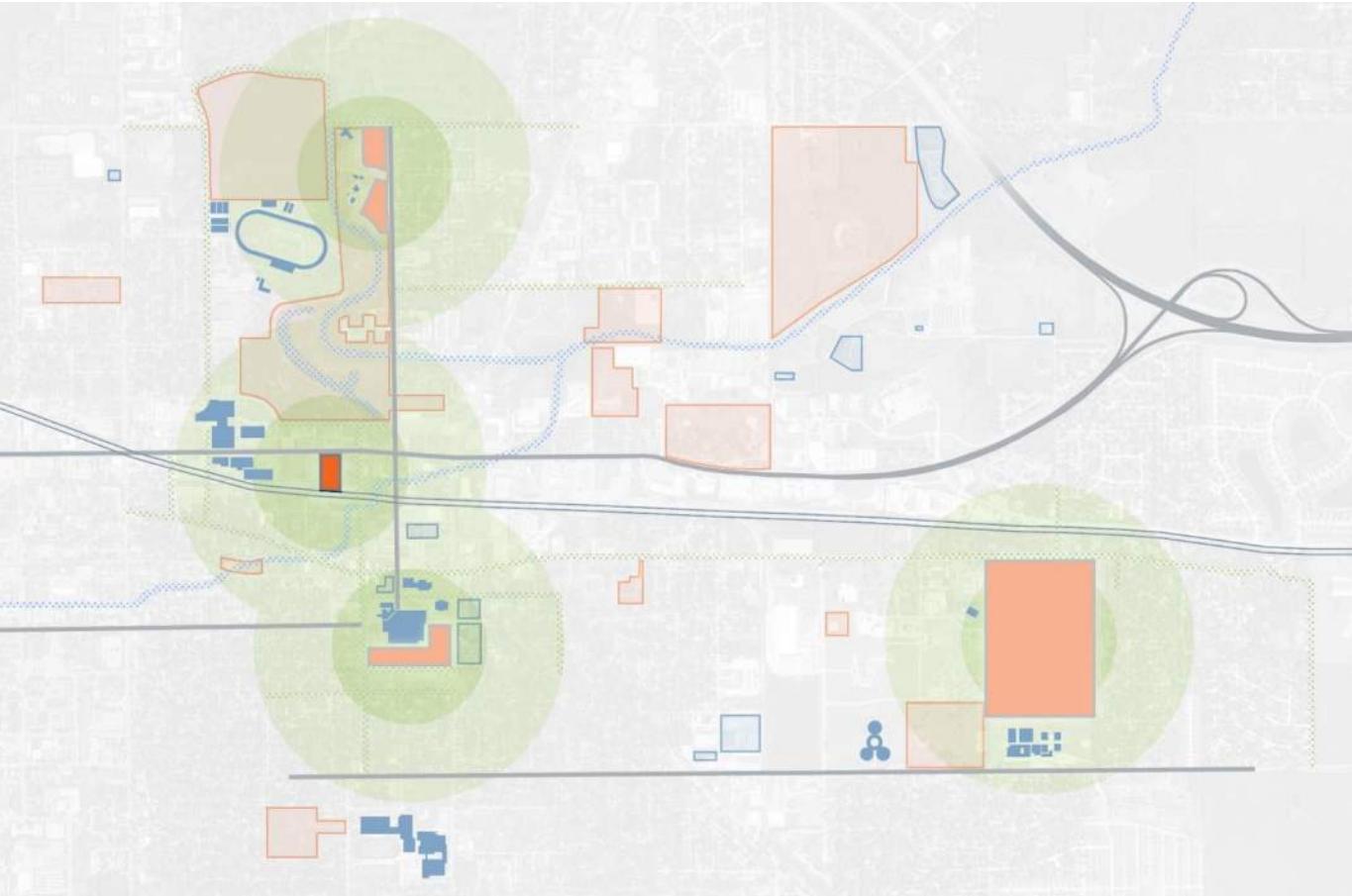
10min  
walk



Urbana Parks



Urbana Properties



# Lincoln Square

Kickapoo Rail Trail

Boneyard Creek / Crystal Lake

Bike Path



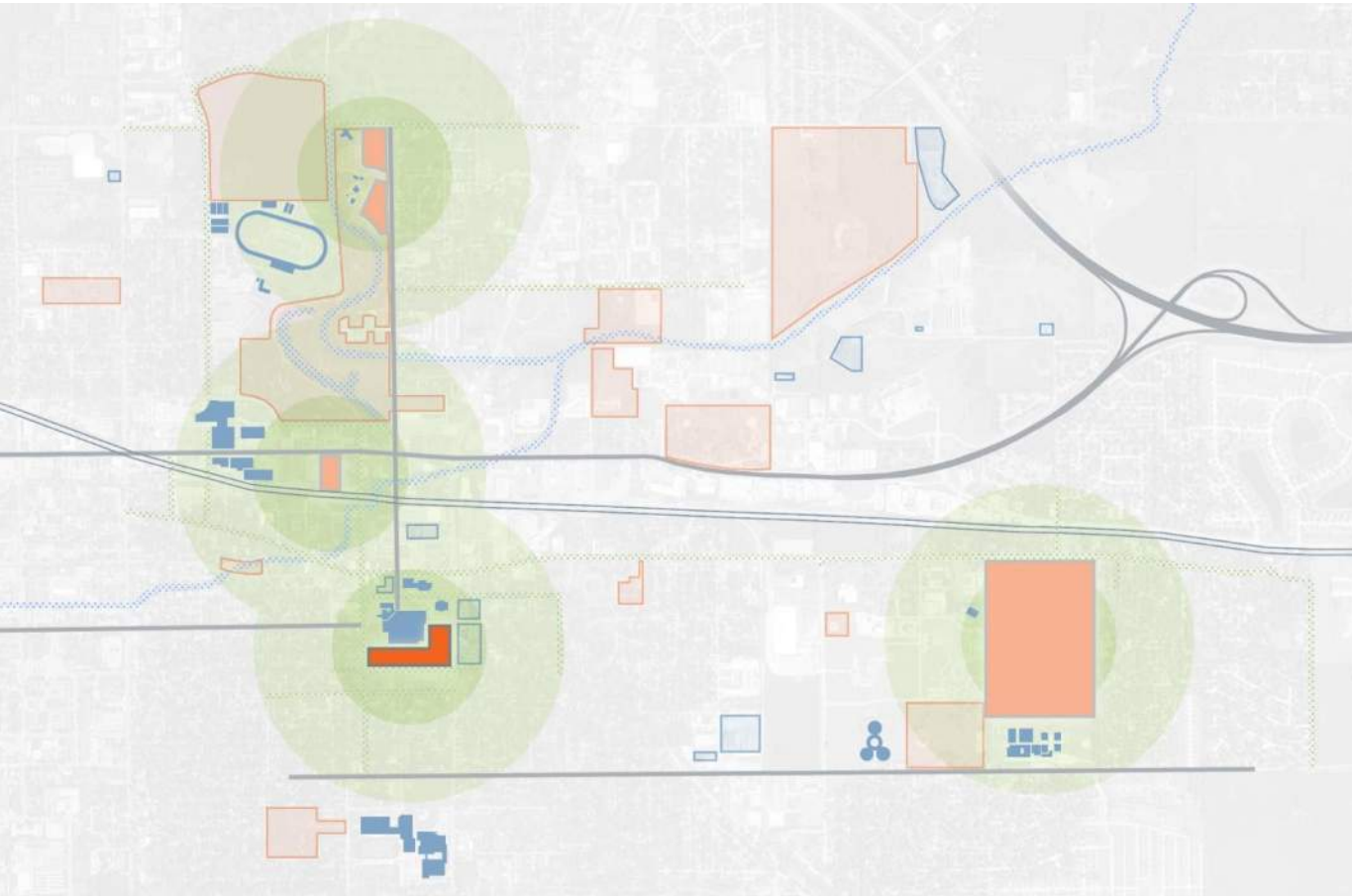
5min  
walk

10min  
walk

Urbana Parks



Urbana Properties



# Crystal Lake Site

Kickapoo Rail Trail



Boneyard Creek / Crystal Lake



Bike Path



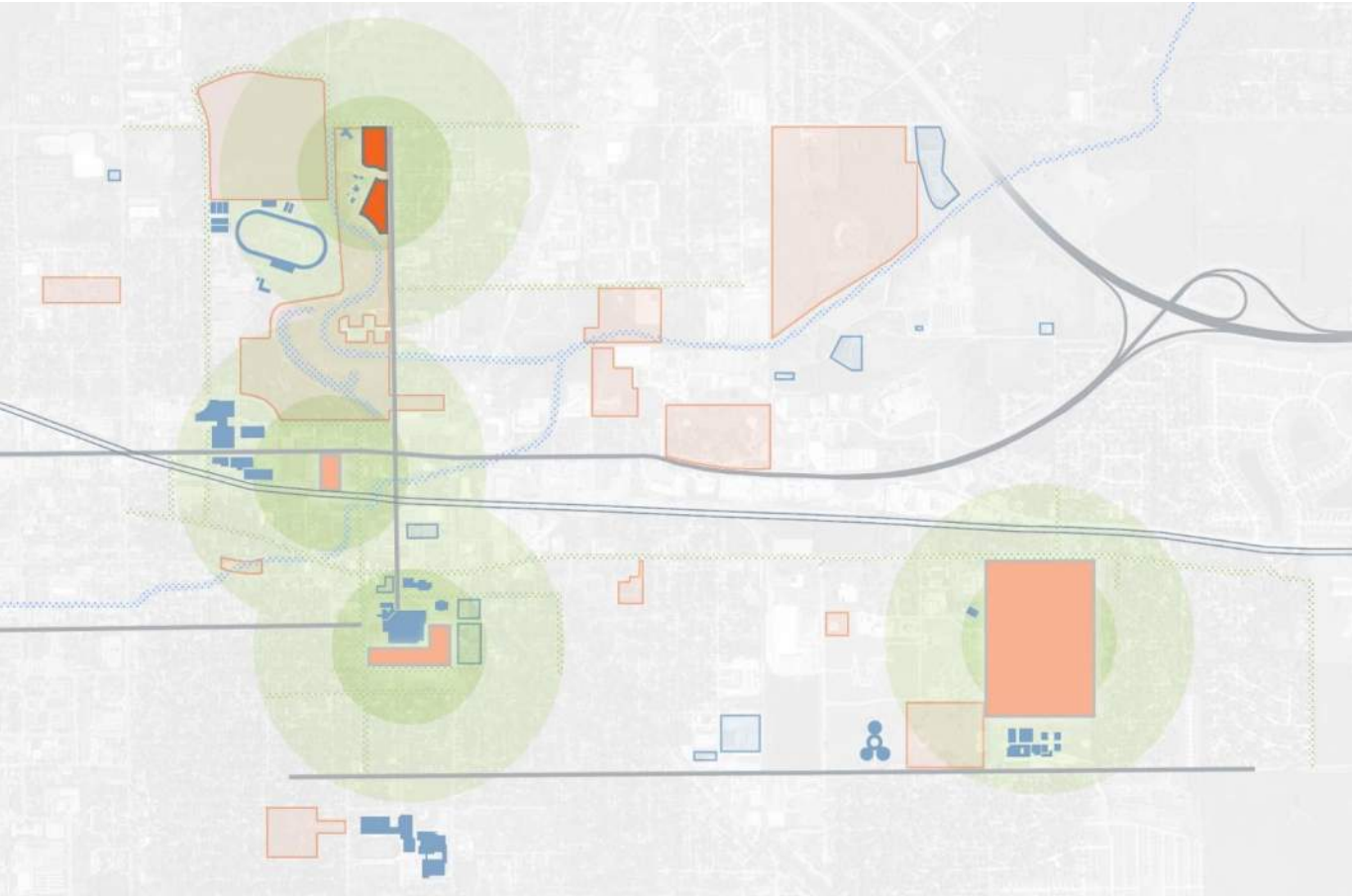
5min  
walk

10min  
walk

Urbana Parks



Urbana Properties



# Key Stakeholders

*October*

## Phase 1 – Fact finding

- City of Urbana
- Champaign County
- Urbana School District
- CUMTD
- Carle
- OSF
- Others?

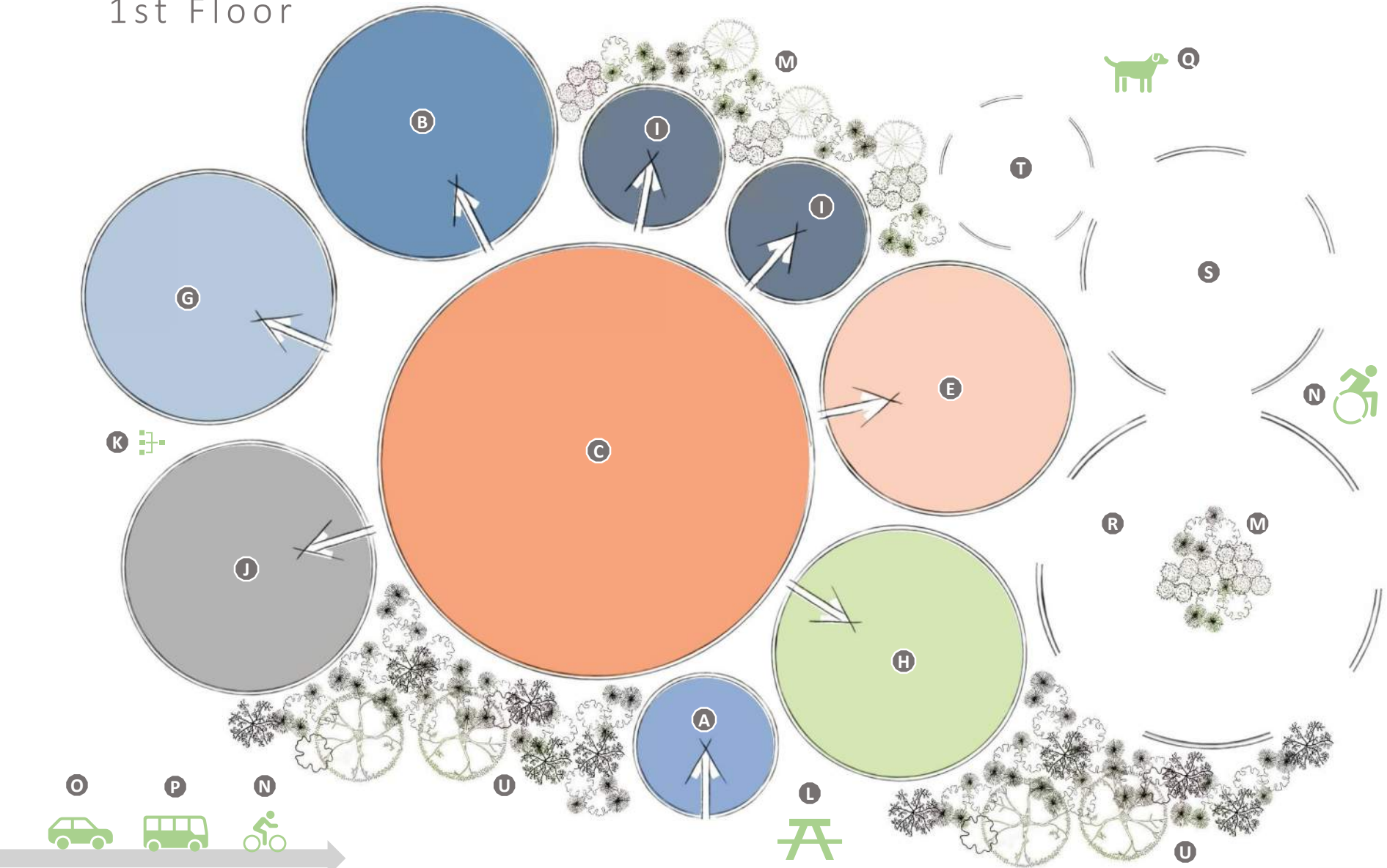




# Project Wishes and Desires

# Previously Discussed

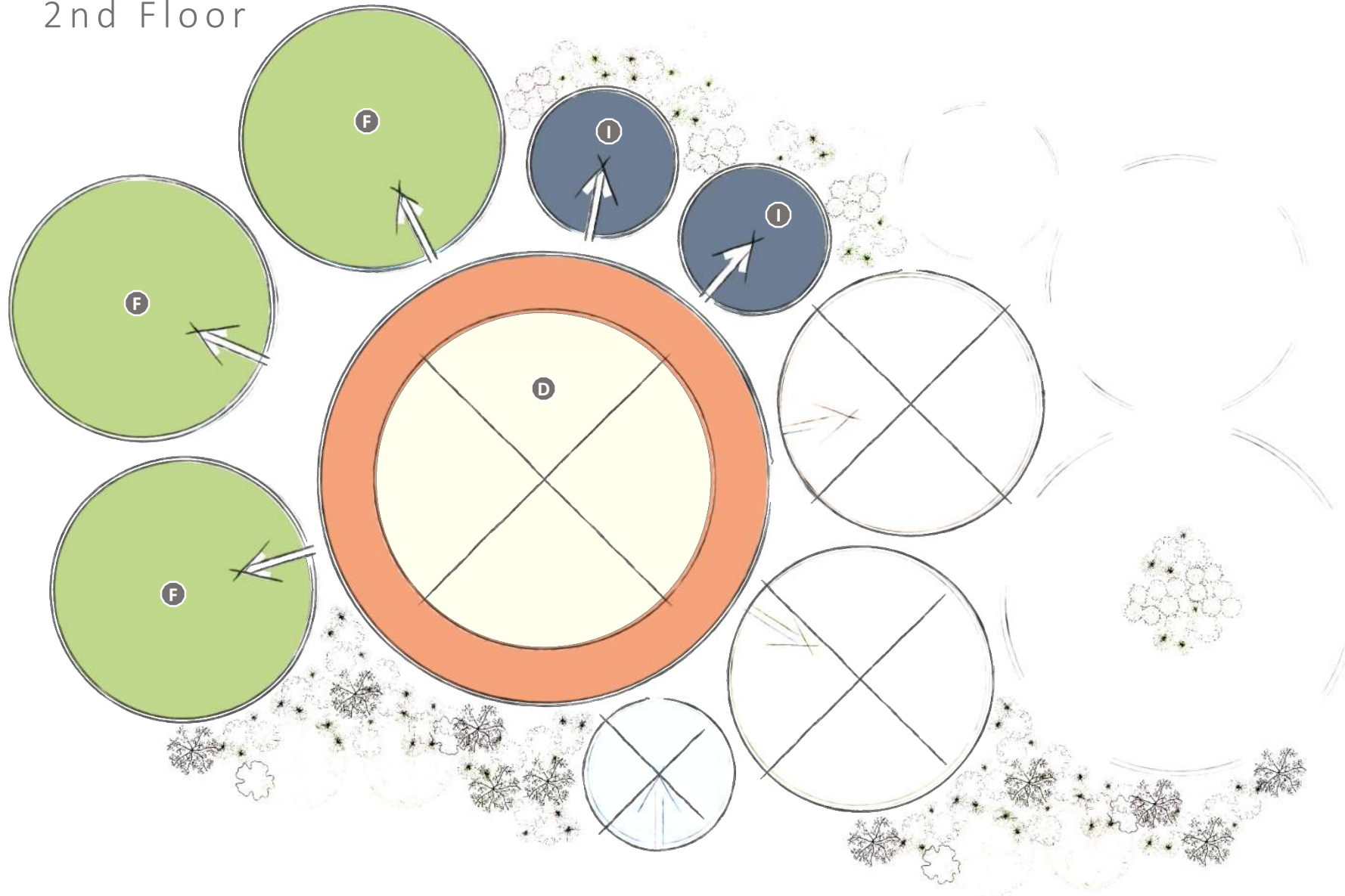
1st Floor



- A** RECEPTION AREA
- B** STAFF OFFICES W/ KITCHENETTE
- C** MULTI-USE COURT SPACE
- D** ELEVATED TRACK + **STRECHING AREA**
- E** CARDIO / WEIGHT ROOM
- F** GROUP FITNESS / DANCE STUDIO
- G** MULTI-USE MEETING SPACE
- H** CHILDCARE / PLAY AREA
- I** LOCKER ROOMS
- J** STORAGE AREAS
- K** MECHANICAL
- L** PICNIC + GATHERING SPACE
- M** **NATIVE PRAIRIE PLANTINGS** + STORMWATER
- N** TRAIL + BICYCLE CONNECTIVITY
- O** PARKING FACILITIES / **PERVIOUS PAVEMENT**
- P** **BUS SHELTER**
- Q** **DOG PARK**
- R** **WELLNESS WALK**
- S** **WATER FEATURE + STORMWATER**
- T** **CISTERN IRRIGATION SYSTEM**
- U** **RAIN GARDEN**

# Previously Discussed

2nd Floor



- A RECEPTION AREA
- B STAFF OFFICES W/ KITCHENETTE
- C MULTI-USE COURT SPACE
- D ELEVATED TRACK + **STRECHING AREA**
- E CARDIO / WEIGHT ROOM
- F GROUP FITNESS / DANCE STUDIO
- G MULTI-USE MEETING SPACE
- H CHILDCARE / PLAY AREA
- I LOCKER ROOMS
- J STORAGE AREAS
- K MECHANICAL
- L PICNIC + GATHERING SPACE
- M **NATIVE PRAIRIE PLANTINGS + STORMWATER**
- N TRAIL + BICYCLE CONNECTIVITY
- O PARKING FACILITIES / **PERVIOUS PAVEMENT**
- P **BUS SHELTER**
- Q **DOG PARK**
- R **WELLNESS WALK**
- S **WATER FEATURE + STORMWATER**
- T **CISTERN IRRIGATION SYSTEM**
- U **RAIN GARDEN**

# Next Steps

## Phase 1 – Fact finding

October – November

- Meet with Urbana Park District staff to gather facility and site requirements, wishes and desires. Develop a better understanding of discussions and evaluations that have occurred before our involvement with the project.
- Analyze and recommend up to six possible site locations and identify advantages / disadvantages, opportunities and limitations of each. Analysis shall include, but not be limited to topography, utilities, stormwater management, and pre-existing conditions. Sites will include property owned by Urbana Park District, the City of Urbana, and other private sources.
- Review possible site locations with Urbana Park District before stakeholder group meeting.
- Attend one meeting with stakeholder groups that may include, but are not limited to: City of Urbana, Champaign County, Urbana School District, CUMTD, potential teaming partners like Carle or OSF, etc. The goal will be to obtain input on the various site options and discuss advantages and disadvantages for each. We will lead and guide the public outreach and stakeholder involvement sessions, while recording and documenting the input.