



PRESENTATION TEAM & WEBINAR AGENDA

Presentation Team

Tim Bartlett – tabartlett@urbanaparks.org

Urbana Park District – Executive Director

Derek Liebert – dalieber@urbanaparks.org

Urbana Park District – Superintendent of Planning and Operations

Kara Dudek-Mizel – kadudek@urbanaparks.org

Urbana Park District – Park Planner

Corky Emberson – cremberson@urbanaparks.org

Urbana Park District – Superintendent Of Recreation

Jeff Martin – jmartin@f-w.com

Farnsworth Group – Sr. Urban & Community Planner / Landscape Architect

Project Overview

10 Minutes

Plan Options

15 Minutes

Other Amenities / Next Steps

5 Minutes

Questions & Answers

30 Minutes

PROJECT OVERVIEW

- Welcome and Thanks!
- Benefits of Master Planning
- Early Site History and First Master Plan
- Kickapoo Rail Trail Connection
- Expansion and Growth
- New Master Plan



PROCESS TO DATE

Fall 2022	▪ Staff Design Workshop #1
November 2022	▪ Online Public Survey #1
January 2023	▪ Needs Assessment with Staff Input
February 2023	▪ Focus Group #1 – Athletic Fields
February 2023	▪ Focus Group #2 – General Recreation
March 2023	▪ Staff Design Workshop #2
May 2023	▪ Staff Design Workshop #3 (Review Four Site Concepts)
June 2023	▪ Board Study Session / UPDAC Meeting
Summer 2023	▪ Online Webinar of Two Preferred Plans
Summer 2023	▪ Online Public Survey #2
Fall 2023	▪ Finalize Master Plan
Fall 2023	▪ Present Final Master Plan to Board
Fall 2023	▪ Public Open House

Urbana Park District Outdoor Courts, Fields and Amenities Survey

Tell the Park District your thoughts about the future of athletic courts, fields and amenities

November 23, 2022 02:57 PM



Urbana Park District invites the community to take an online survey to tell planners their thoughts about the future of the park district's outdoor courts, fields and amenities.

Focus Group #1 – Athletic Fields

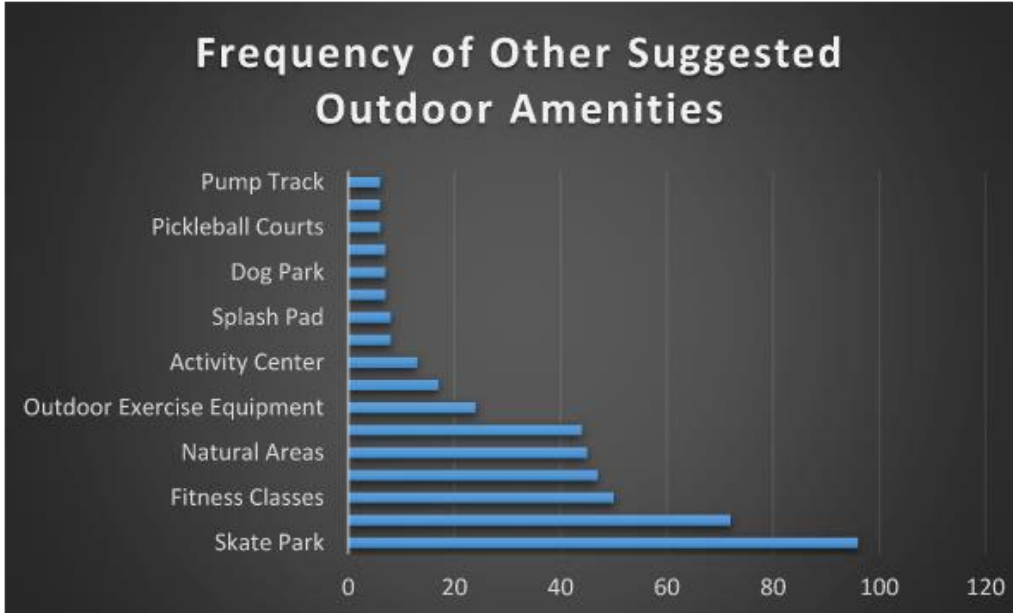
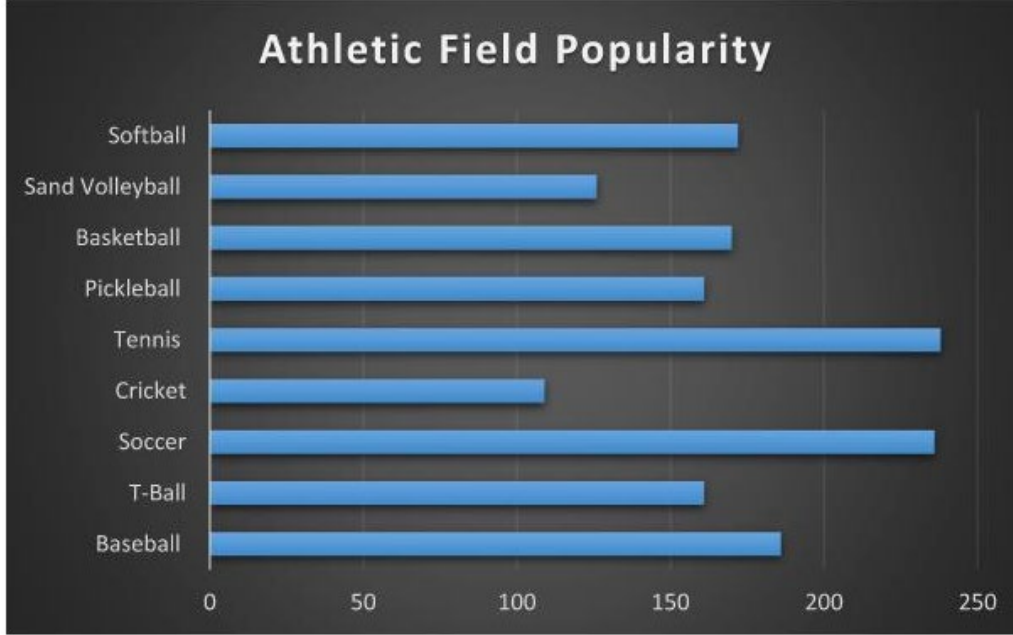


Urbana Park District Outdoor Courts, Fields, and Amenities Survey

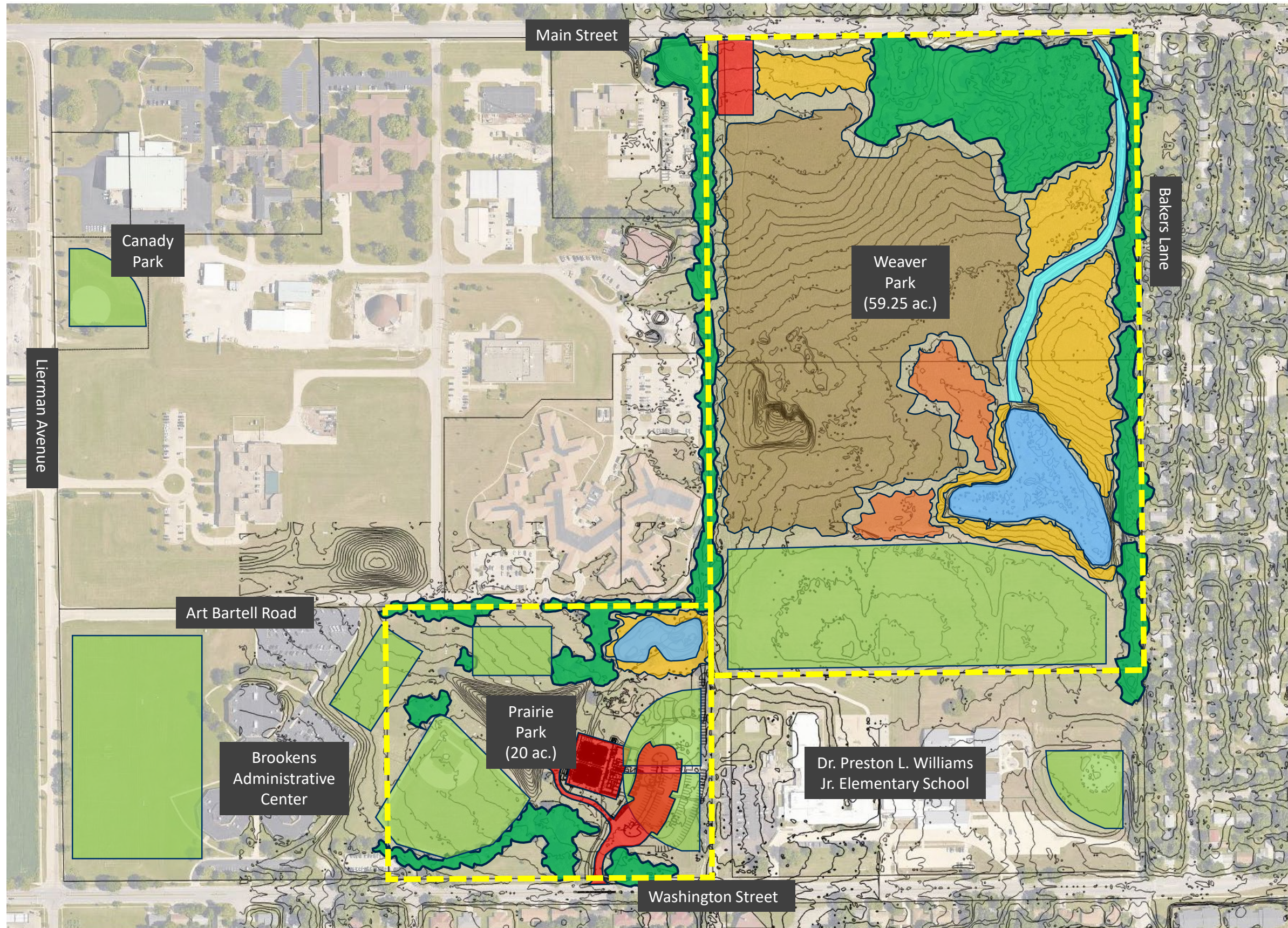
Section 1: Outdoor Fields

1. Does your household use any of the Urbana Park District's athletic fields? (softball, baseball, t-ball, soccer, cricket, etc.)

- Yes
- No (if no, you will automatically skip to the next section: Outdoor Courts)



EXISTING CONDITIONS



HEALTH & WELLNESS FACILITY





OPTION 1

OPTION 1 – MASTER PLAN



Total Area (Weaver Only)	59.25 acres
------------------------------------	-------------

Natural Area (Weaver Only)	~29.25 acres (49%)
--------------------------------------	-----------------------

Parking Data	Weaver North:	155
	Weaver South:	130
	Weaver Overflow:	145
	Prairie East Ph. 1:	81
	Prairie East Ph. 2:	~ 71
	Prairie West:	60
Total:	~ 642	

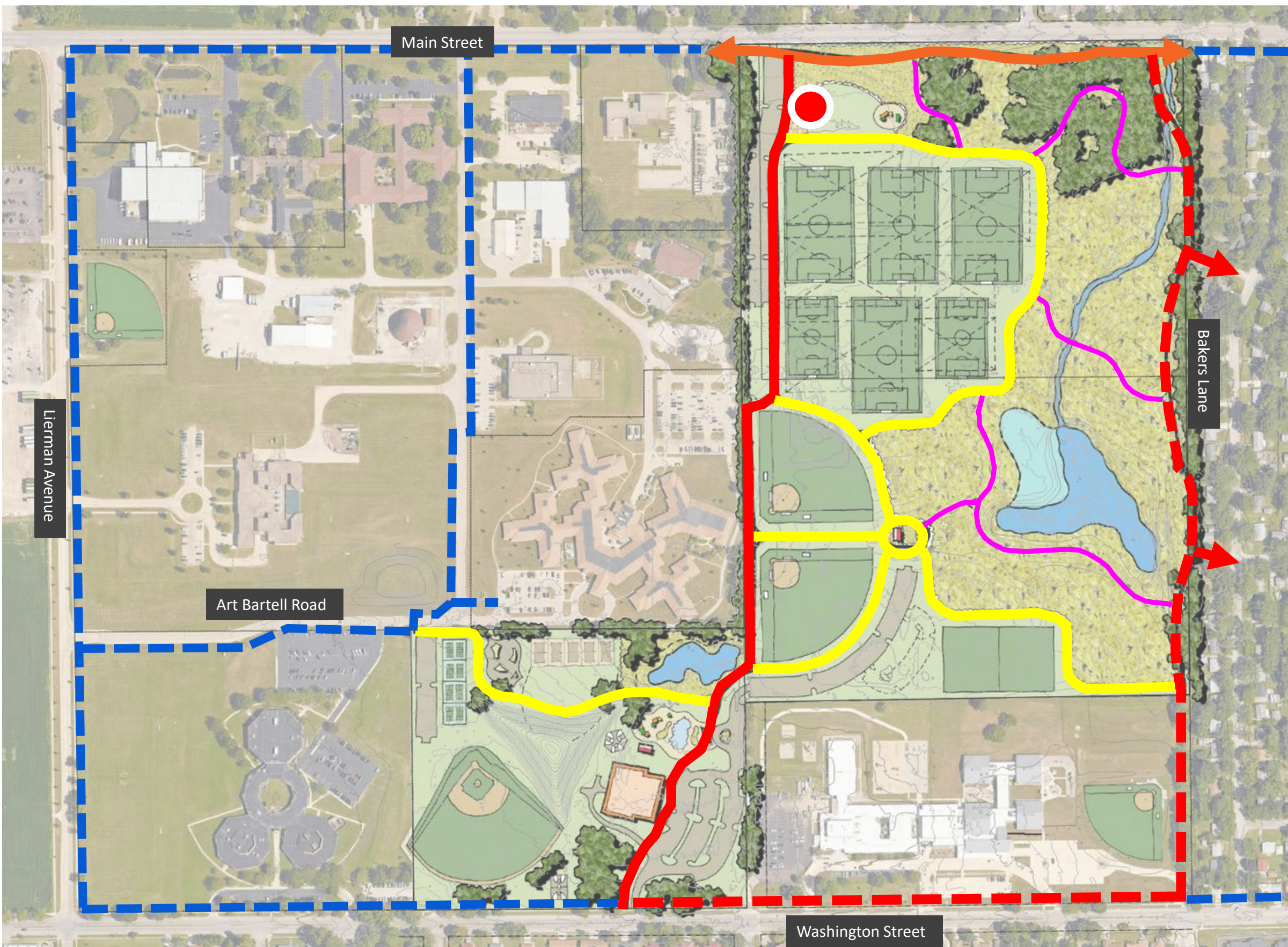
Suggested New Amenities	Weaver Park:
	<ul style="list-style-type: none"> (4) Large Soccer Fields (180' x 330') (2) Small Soccer Fields (141' x 225') (2) Softball Diamonds (300') (1) Multi-Purpose Field (180' x 330') (1) Restroom Building (1) KRT Trailhead with Restroom (1) Small Playground (1) Storage Shed (Softball) (1) Wetland Overlook 10' Wide Concrete Paths 5' Wide Soft Surface Paths
	Prairie Park:
	<ul style="list-style-type: none"> (4 to 8) Pickleball Courts (5) Sand Volleyball Courts (1) Skate Park (1) Splash Pad (1) Large Playground (1) Restroom (Splash Pad) (3) Half-Court Basketball (1) Full-Court Basketball (50' x 75')



OPTION 1 – SOCCER FIELD ROTATION AND OVERFLOW PARKING



OPTION 1 - TRAILWAYS



Running Loop	~1.5 Miles
	Existing Multi-Use Path
	ITEP Funded Multi-Use Concrete Path (Est. 2025 Construction)
	Multi-Use Concrete Path to Complete Loop
	KRT Trailhead (Est. 2025-26 Construction)
	Multi-Use Concrete Maintenance and Recreation Paths
	Natural Surface Narrow Walking Trails
	Adjacent Pedestrian / Bicycle Networks





OPTION 2

OPTION 2 – MASTER PLAN



Total Area (Weaver Only)	59.25 acres
------------------------------------	-------------

Natural Area (Weaver Only)	~31.60 acres (53%)
--------------------------------------	-----------------------

Parking Data	Weaver North:	170
	Weaver South:	155
	Weaver Overflow:	165
	Prairie East Ph. 1:	81
	Prairie East Ph. 2:	~ 71
	Prairie West:	60
	Total:	~ 702

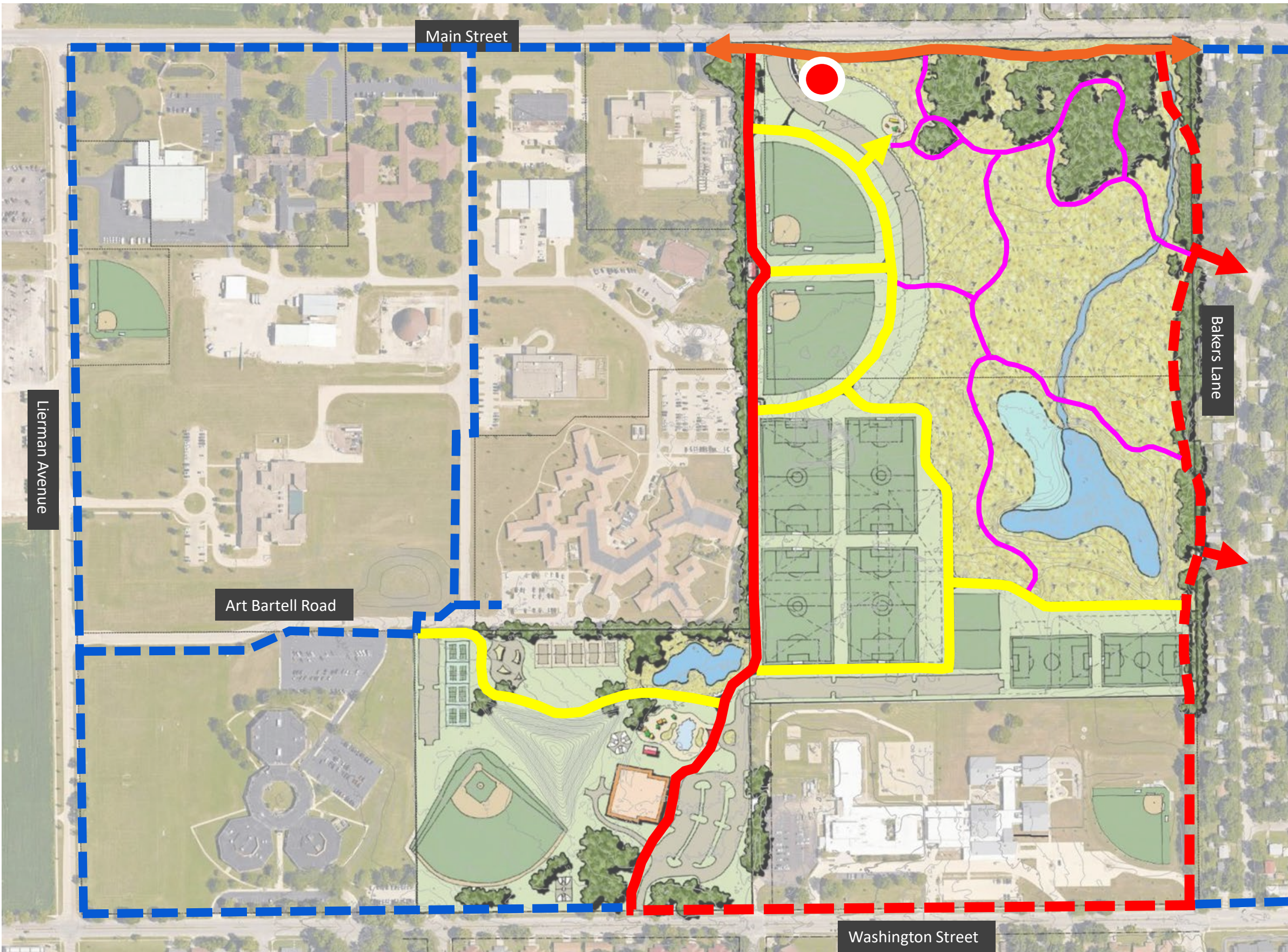
Suggested New Amenities	Weaver Park:
	<ul style="list-style-type: none"> (4) Large Soccer Fields (180' x 330') (2) Small Soccer Fields (141' x 225') (2) Softball Diamonds (300') (1) Multi-Purpose Field (140' x 225') (1) Restroom Building (1) KRT Trailhead with Restroom (1) Small Playground (1) Storage Shed (Softball) 10' Wide Concrete Paths 5' Wide Soft Surface Paths
	Prairie Park:
	<ul style="list-style-type: none"> (4 to 8) Pickleball Courts (5) Sand Volleyball Courts (1) Skate Park (1) Splash Pad (1) Large Playground (1) Restroom (Splash Pad) (3) Half-Court Basketball (1) Full-Court Basketball (50' x 75')



OPTION 2 – SOCCER FIELD ROTATION AND OVERFLOW PARKING



OPTION 2 - TRAILWAYS

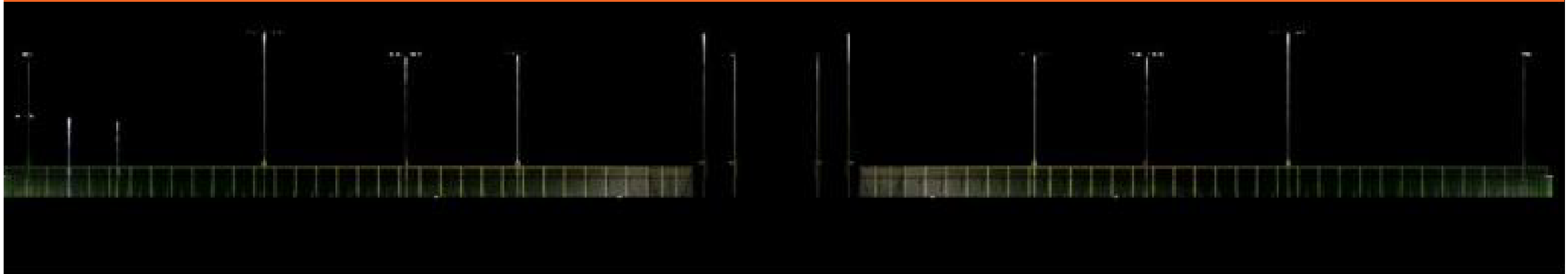


Running Loop	~1.5 Miles
	Existing Multi-Use Path
	ITEP Funded Multi-Use Concrete Path (Est. 2025 Construction)
	Multi-Use Concrete Path to Complete Loop
	KRT Trailhead (Est. 2025-26 Construction)
	Multi-Use Concrete Maintenance and Recreation Paths
	Natural Surface Narrow Walking Trails
	Adjacent Pedestrian / Bicycle Networks



DARK SKY LIGHTING

Ground View Looking West (Lighting Simulation Provided by Musco Sports Lighting, LLC)



Aerial View Looking East (Lighting Simulation Provided by Musco Sports Lighting, LLC)



Other Amenities

Other amenities were also identified by the community as important, some of these are listed below and survey-takers will be asked to rank from most important to least important in their opinion.

- A. **Amphitheater**- casual or more natural looking for concerts, performances, fitness classes, etc.
- B. **Basketball courts**
- C. **Bicycle opportunities**- such as bike courses, pump tracks, or a bicycle safety course for kids
- D. **Concrete game board tables** (chess, checkers, backgammon)
- E. **Concrete ping pong tables**
- F. **Gaga ball pits**
- G. **Interpretive exhibits and overlooks**- for wetlands and natural areas
- H. **Multipurpose fields** (soccer, football, ultimate Frisbee, lacrosse, etc.)
- I. **Unique playground amenities**- such as rock climbing or zip lines

- Presentation recording posted to project website
- Survey posted for three weeks, from August 23-September 13
- Input used to create a final master plan
- Open-house style meeting in late fall with master plan and vision book

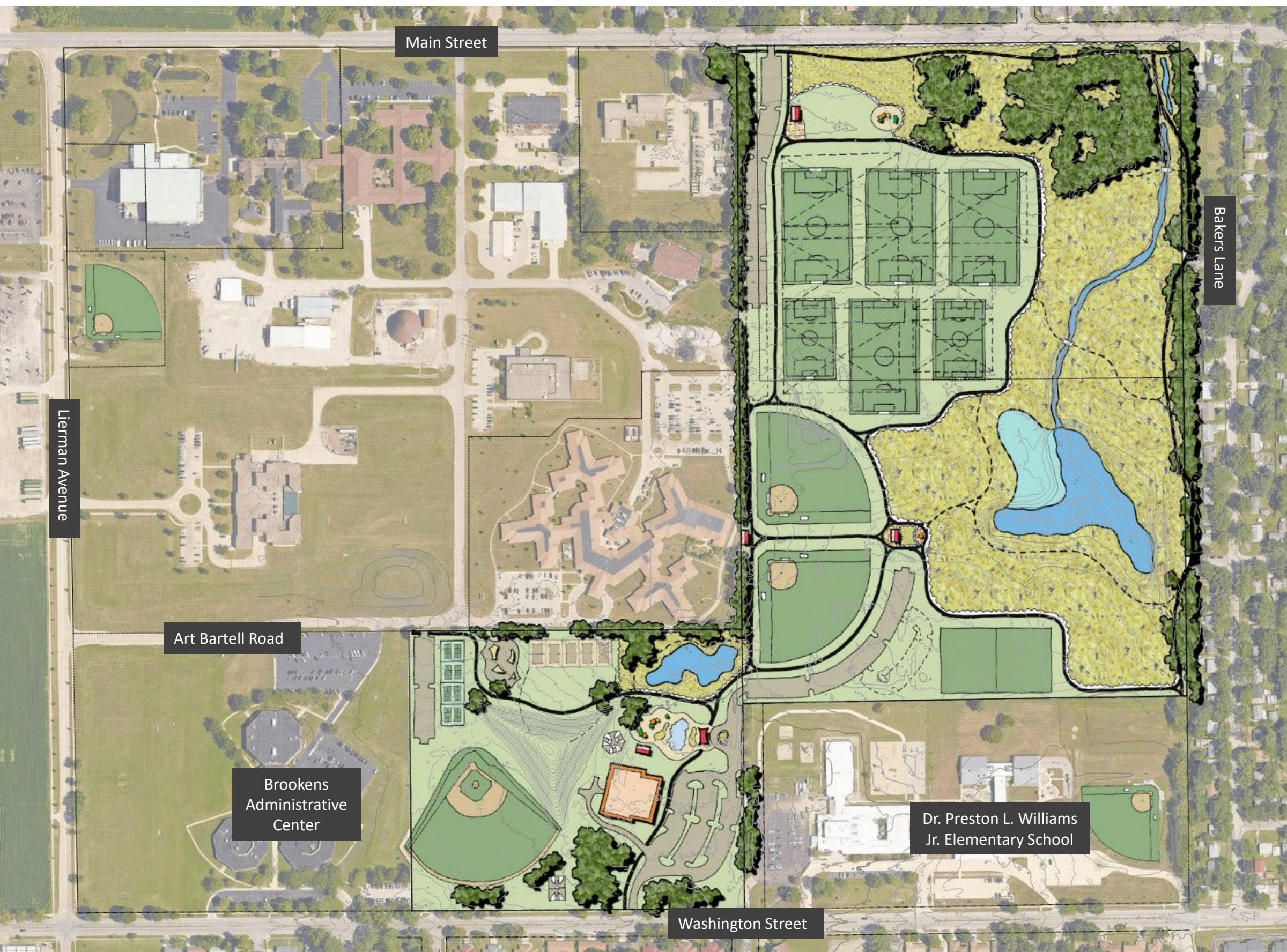
Project Website:

<https://www.urbanaparks.org/projects/weaver-and-prairie-parks-planning/>



END OF VIDEO PRESENTATION

OPTION 1 – MASTER PLAN



Total Area (Weaver Only)	59.25 acres
------------------------------------	-------------

Natural Area (Weaver Only)	~29.25 acres (49%)
--------------------------------------	-----------------------

Parking Data	Weaver North:	155
	Weaver South:	130
	Weaver Overflow:	145
	Prairie East Ph. 1:	81
	Prairie East Ph. 2:	~ 71
	Prairie West:	60
Total:	~ 642	

Suggested New Amenities	Weaver Park:
	<ul style="list-style-type: none"> (4) Large Soccer Fields (180' x 330') (2) Small Soccer Fields (141' x 225') (2) Softball Diamonds (300') (1) Multi-Purpose Field (180' x 330') (1) Restroom Building (1) KRT Trailhead with Restroom (1) Small Playground (1) Storage Shed (Softball) (1) Wetland Overlook 10' Wide Concrete Paths 5' Wide Soft Surface Paths
	Prairie Park:
	<ul style="list-style-type: none"> (4 to 8) Pickleball Courts (5) Sand Volleyball Courts (1) Skate Park (1) Splash Pad (1) Large Playground (1) Restroom (Splash Pad) (3) Half-Court Basketball (1) Full-Court Basketball (50' x 75')



OPTION 2 – MASTER PLAN



Total Area (Weaver Only)	59.25 acres
------------------------------------	-------------

Natural Area (Weaver Only)	~31.60 acres (53%)
--------------------------------------	-----------------------

Parking Data	Weaver North:	170
	Weaver South:	155
	Weaver Overflow:	165
	Prairie East Ph. 1:	81
	Prairie East Ph. 2:	~ 71
	Prairie West:	60
Total:	~ 702	

Suggested New Amenities	Weaver Park:
	<ul style="list-style-type: none"> (4) Large Soccer Fields (180' x 330') (2) Small Soccer Fields (141' x 225') (2) Softball Diamonds (300') (1) Multi-Purpose Field (140' x 225') (1) Restroom Building (1) KRT Trailhead with Restroom (1) Small Playground (1) Storage Shed (Softball) 10' Wide Concrete Paths 5' Wide Soft Surface Paths
	Prairie Park:
	<ul style="list-style-type: none"> (4 to 8) Pickleball Courts (5) Sand Volleyball Courts (1) Skate Park (1) Splash Pad (1) Large Playground (1) Restroom (Splash Pad) (3) Half-Court Basketball (1) Full-Court Basketball (50' x 75')



1. Which master plan option do you prefer (Option 1 or Option 2)?
 - A. Why do you prefer this option?
 - B. How would you improve this option?
2. In your opinion, what is the one most important amenity or activity to ensure is included in the final master plan?
3. Other comments or questions